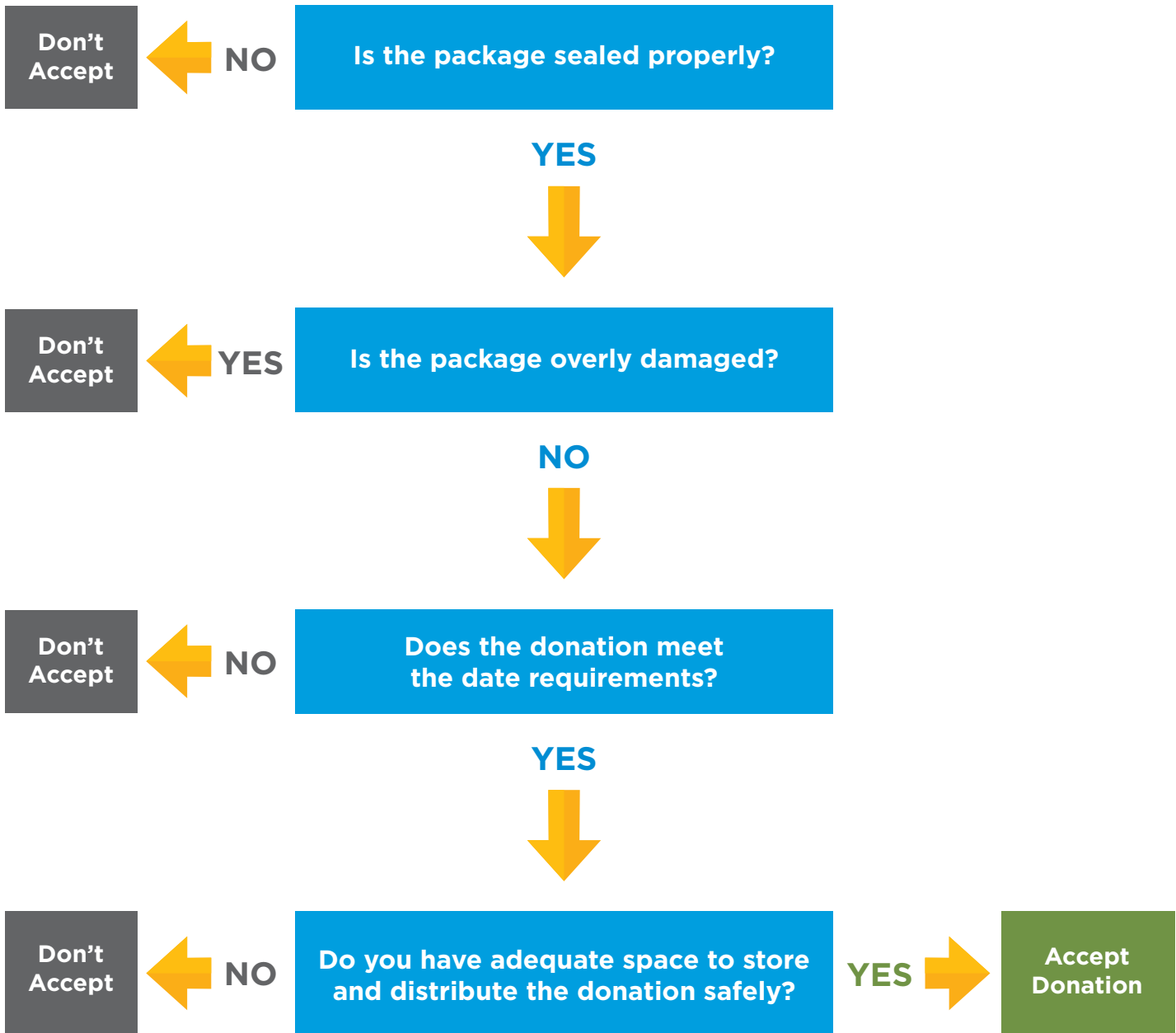




# NONPERISHABLE DONATIONS

I WANT TO TAKE A DONATION OF NONPERISHABLE ITEMS





# NONPERISHABLE DONATIONS

## NONPERISHABLE DONATIONS INCLUDE

- Canned goods (fruit, soup, vegetables, etc.)
- Jarred goods: glass or plastic (jelly, peanut butter, etc.)
- Packaged dry goods (granola bars, flour, chips, etc.)

## STORAGE PRIOR TO PICKUP

- Donor must have a designated location labeled, stating that the food in that location is for donation purposes
- Donated food must be kept off the ground

## PACKAGING REQUIREMENTS

- Package is labeled so you can read a description of the product, the name of the distributor, and a list of the ingredients
- Package is coded so you can trace it later if needed

CANNED GOODS	JARRED GOODS	PACKAGED DRY GOODS
<ul style="list-style-type: none"> <li>• Small dents that are not on the seal are acceptable</li> <li>• Dirt or rust that can be wiped off is acceptable</li> </ul>	<ul style="list-style-type: none"> <li>• Package is not damaged</li> <li>• Tamperproof seal is intact</li> <li>• Items are in original container</li> <li>• Vacuum seal is intact</li> </ul>	<ul style="list-style-type: none"> <li>• If individually packaged, packaging should be intact and sealed with no tears, rips, stains, etc.</li> <li>• If individual packs are packaged together and the outer package is damaged but the internal packages are intact, accept donation</li> <li>• Items are in original package</li> <li>• Product looks good, no mold or bad odor</li> </ul>

## CODE DATE REQUIREMENTS

- Accept donations that are within 30 days from code date
- Donations can be stored for up to 6 months; use caution with grains, flours, and pastas due to possible pest infestation

## HANDLING AND STORAGE CONDITIONS

- Enough room to store donation
- Donation must be stored off the floor
- Store allergens (peanuts, flour, etc.) below other items if stored on a shelving unit
- Storage area must be clean
- Store breakable items on bottom of shelving unit

**Questions? Contact your local Feeding America food bank.**

